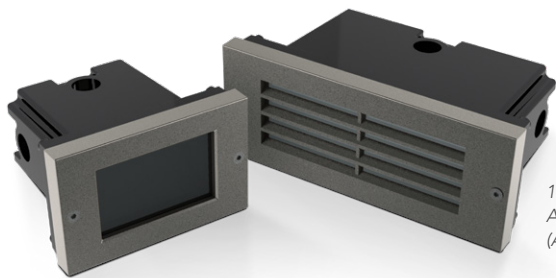


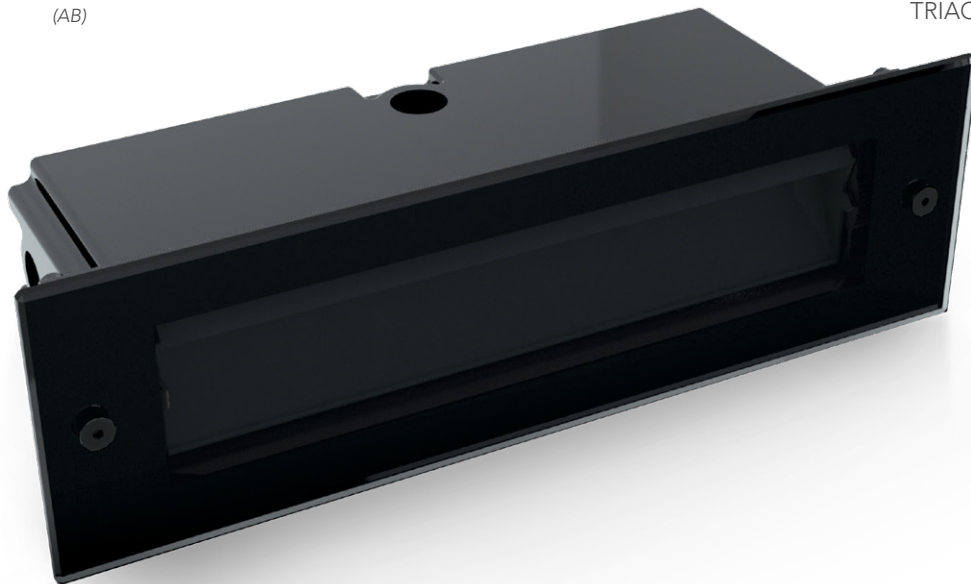
1500 SERIES LED STEP LIGHTS

1500 Series LED Step Lights from Vista Professional Outdoor Lighting feature sharp cutoff LED optics and adjustable hot aiming for precise, even illumination without glare. The modular LED design eases installation and the housings feature improved sealing for water tightness. Units are available in three sizes and multiple aperture styles, including customizable options. The series utilizes Cree® XT-E LEDs.



1501 »
Aluminum Border
(AB)

1503 »
Aluminum Louver
(AL)



1505 »
Glass Border (GB)

PRODUCT ADVANTAGES

- » Modular LED design enhances and speeds installation
- » Sharp cutoff optics for even illumination without glare
- » Hot aiming allows for precise light placement with 30° of adjustment max candela from horizontal
- » Accommodates installations in: concrete, brick/block, wood frame construction (both IC and non-IC)
- » Universal voltage drivers 120-277V
- » Water tightness
- » Quick ship back boxes; box extensions available to correct improper installations
- » Can be easily modified or customized to meet specific installation or specifier requirements
- » Dimming options include Phase Cut TRIAC and 0-10V



AMERICAN MADE



ARCHITECTURAL
LIGHTING

FEATURES

HOUSING

- » Compression-molded fiber-reinforced polymer
- » High-strength, heat resistant and UV stable

DOOR COVER

Door cover available in choice of three styles:

- » Beveled edge tempered glass aperture plate
- » Die-cast copper-free aluminum bordered cover with tempered glass lens
- » Die-cast copper-free aluminum louvered cover with tempered glass lens

LED

- » High output LED, powered for high efficiency
- » Universal voltage input
- » Modular performance optic package

OPTICS / AIMING

- » No-glare optics
- » Hot-aiming adjustable performance optic assembly
- » 30° of adjustment for precise beam control

ELECTRICAL

- » Constant current Class 2 output driver
- » Suitable for through branch wiring
- » Four ½" NPT conduit entry hubs with knockout membrane standard
- » Dimming options available: 0-10 VDC or PCT

MOUNTING

Rough in Box designed for installations in:

- » Concrete
- » Brick / Block
- » Wood frame Construction (Non-IC)
- » Insulated Walls (IC)

FASTENERS

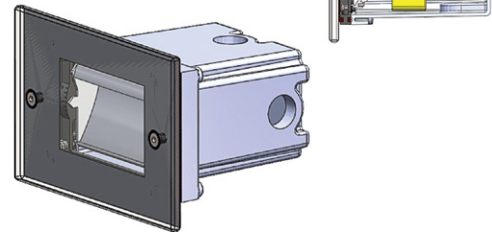
- » Stainless steel fasteners

LISTING

- » UL listed for US and Canada
- » Suitable for wet locations

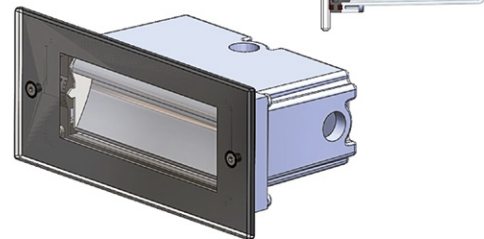
1501 Series

Short Rectangular 3 LED Model
3" x 4" x 5"



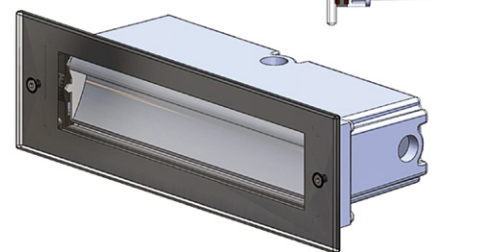
1503 Series

Medium Rectangular 6 LED Model
3" x 4" x 8"



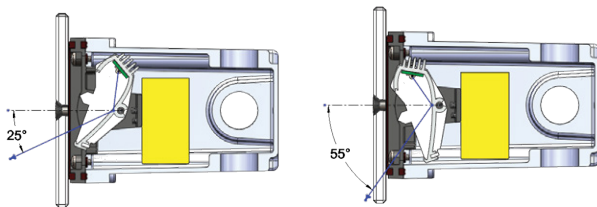
1505 Series

Long Rectangular 9 LED Model
3" x 4" x 12"



Performance Optic Package – Hot Aiming

Aiming Range Details: Optic can adjust 15° up or down to increase or decrease the throw of light.



**ARCHITECTURAL
LIGHTING**

1625 Surveyor Ave | Simi Valley, CA 93063

t: 805-527-0987 | 800-766-VISTA (8478) | f: 888-670-VISTA (8478) | email@vistapro.com | vistapro.com