



TYPE: MODEL:
 PROJECT:

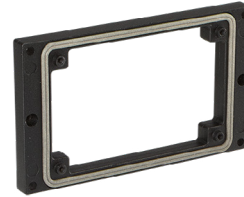
PRODUCT FEATURES



Material Die-cast Aluminum

Gasket Molded Silicone

Hardware Four 8-32 stainless steel screws



DESCRIPTION

Patented extension ring system allows for proper placement of finished steplight components when the recessed housing has been improperly positioned within a wall (too deep). The ER-1502 ring extends the recessed housing towards final surface by $\frac{3}{8}$ " for each ring used.

OPTIONS

ER-1502-1 Single ring extension accommodates a recessed measurement of $0" - \frac{3}{8}"$

ER-1502-2 Two ring extension accommodates a recessed measurement of $\frac{3}{8}" - \frac{3}{4}"$

ER-1502-3 Three ring extension accommodates a recessed measurement of $\frac{3}{4}" - 1 \frac{3}{8}"$

DIMENSIONS

